



SIMPLY HOMES

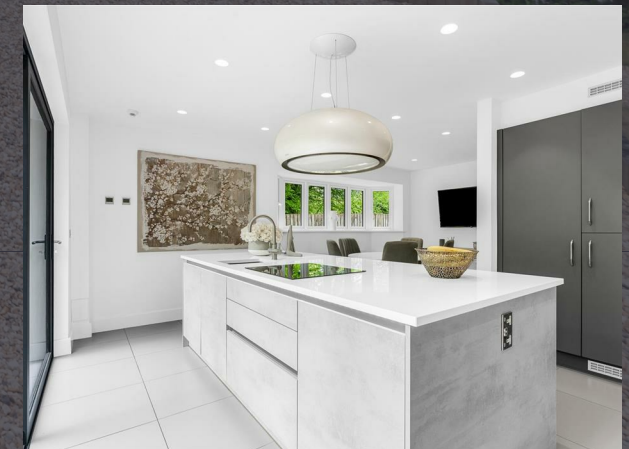
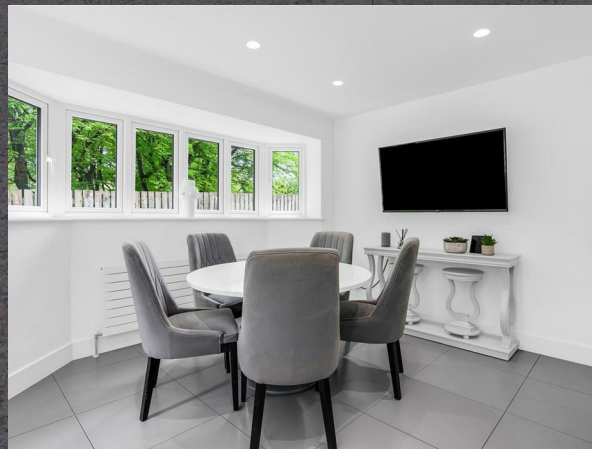
Bishops Road

Welwyn AL6 0NW

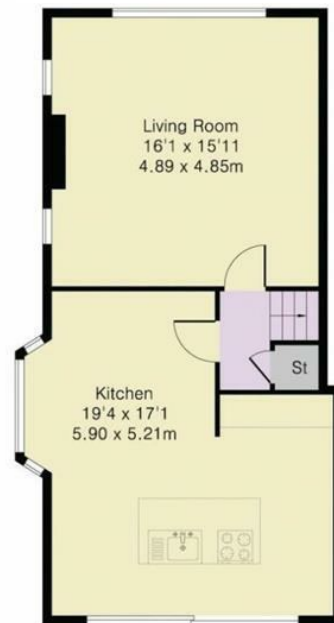


Bishops Road

Welwyn AL6 0NW



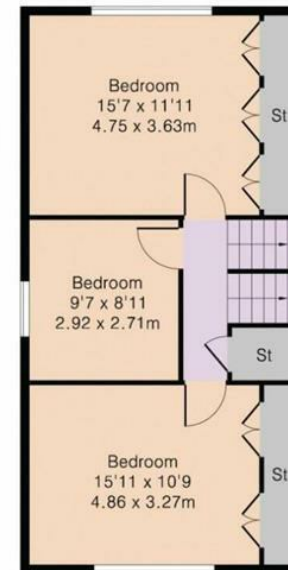
Approximate Gross Internal Area 1861 sq ft – 174 sq m
Lower Ground Floor Area 591 sq ft – 55 sq m
Ground Floor Area 419 sq ft – 39 sq m
First Floor Area 522 sq ft – 49 sq m
Second Floor Area 329 sq ft – 31 sq m



Lower Ground Floor



Ground Floor



First Floor



Second Floor



Although Pink Plan Ltd ensures the highest level of accuracy, measurements of doors, windows and rooms are approximate and no responsibility is taken for error, omission or misstatement. These plans are for representation purposes only as defined by RICS code of measuring practise. No guarantee is given on total square footage of the property within this plan. The figure icon is for initial guidance only and should not be relied on as a basis of valuation.



SIMPLY HOMES

115 Fore Street | Hertford | SG14 1AS | 01992 558 557 | sales@simply-homes.co.uk | simply-homes.co.uk | Find us on

